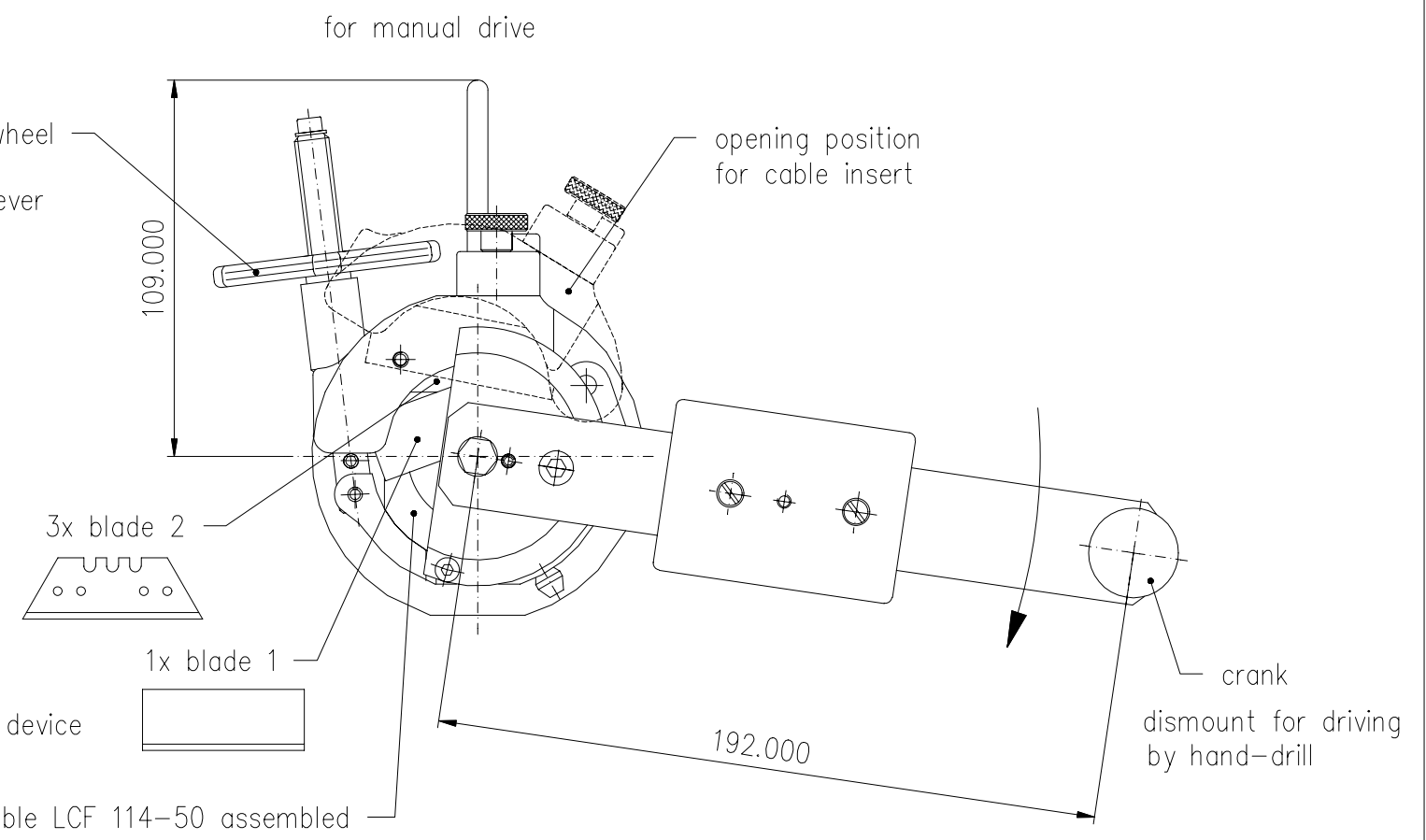
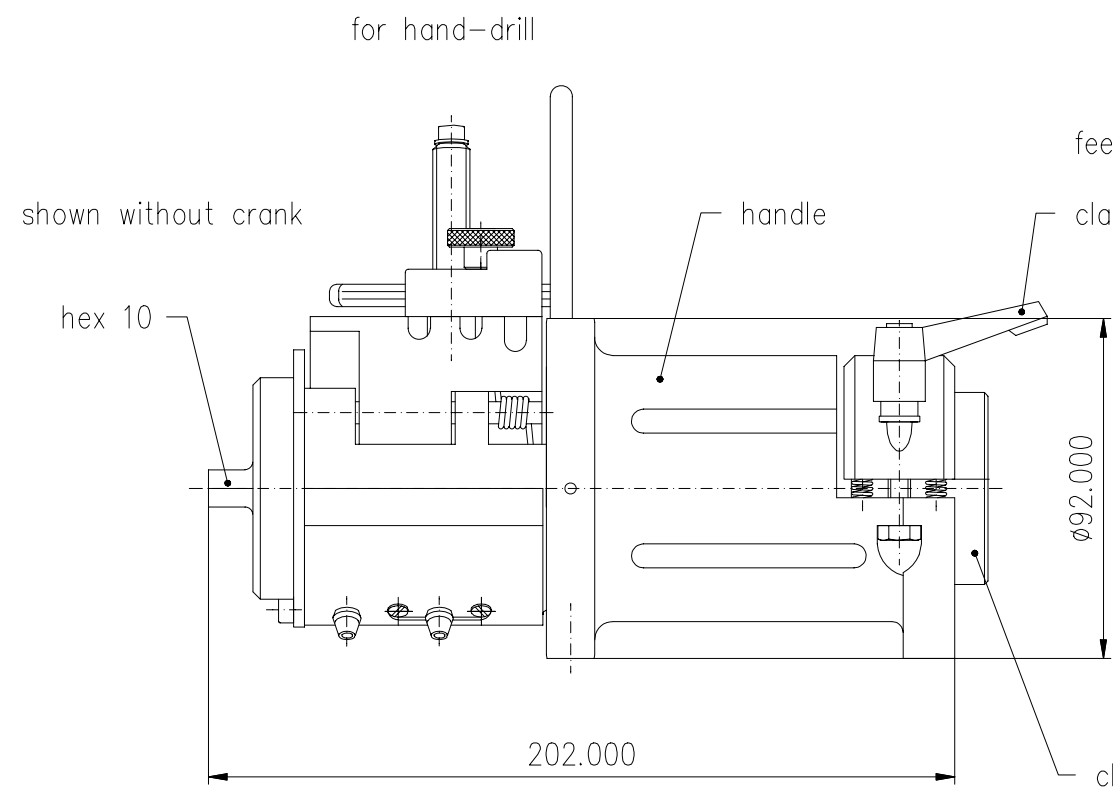
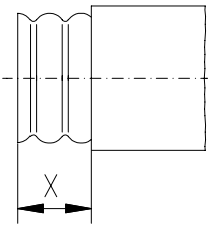


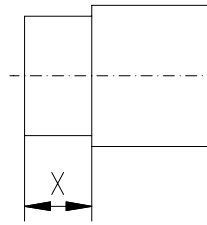
© 1999 Spinner GmbH Elektrotechnische Fabrik
 This drawing is proprietary to us. All rights reserved.
 Any use, transfer or reproduction of the drawing or the
 know-how contained therein requires our express consent.



LCF 114-50
 LCF 158-50

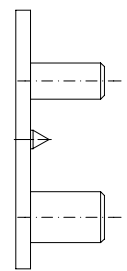


RLF 8/33
 RLF 13/33

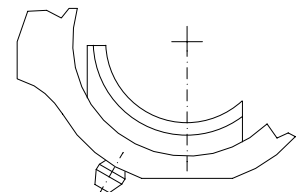


LCF 114-50	RLF 8/33	RLF 13/33
LCF 114-50	RLF 8/33-75 Ω	RLF 13/33-50 Ω
LCF 158-50	RLF 8/33-75 Ω	RLF 13/33-50 Ω
trimming dimension X	19 ±1	19 ±1
	32 ⁺²	38 ⁺²

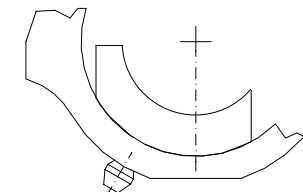
sizing tool for cable
 LCF 114-50
 LCF 158-50



collet half for cable
 LCF 158-50



collet half for cable
 RLF 13/33 and RLF 8/33



material:
 upper and lower parts aluminium alloy
 blades and hex 10 steel hardened
 springs and pins stainless steel
 clamping device and collet halves PTFE

weight of trimming tool: approx. 2 kg

instructions for use: M30683

accessories:
 sizing tool (for cable LCF 114-50 and LCF 158-50 only)
 collet half for cable LCF 158-50
 collet half for cable RLF 13/33 and RLF 8/33

A set of spare blades (1x blade 1 and 3x blade 2)
 can be ordered under order no. BN 109262

design subject to modification CAD

Nicht tolerierte Maße nach DIN ISO 2768-m Teil 1				Datum	Name	Bezeichnung:	
Erstellt	02.08.1999	Loh	trimming tool for cable				
Gepüft	16.03.2000	Hupfauer	LCF 114-50 LCF 158-50 RLF 13/33 and 8/33				
Gesehen			for manual drive and by hand-drill				
A - - - 16.03.2000 Samusch				Zeichnungs-Nr.:		Format	Maßstab
Ind.	Änd.-Nr.	Datum	Geändert	Spinner GmbH Elektrotechnische Fabrik Erzgießereistraße 33 D-80335 München		541326-0E	1:2

Diese Zeichnung ist unser Eigentum. Verwendung, Vervielfältigung,
 Weitergabe der Zeichnungen oder des darin enthaltenen
 Know-hows an Dritte nur mit unserer ausdrücklichen Genehmigung.